

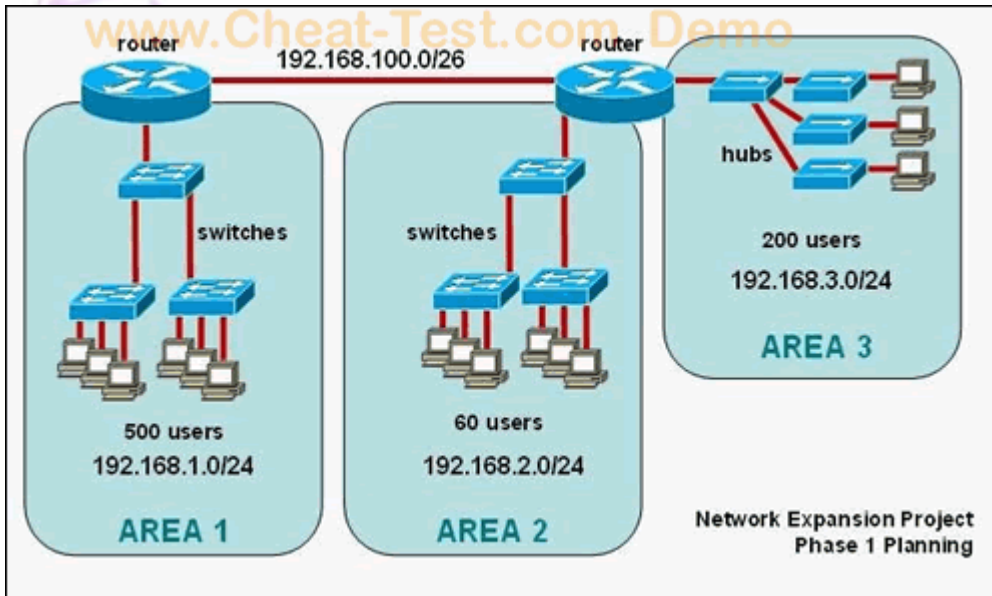
Exam : Cisco 640-822

**Title : Interconnecting Cisco
Networking Devices
Part 1**

Version : Demo

Cheat-Test, [help you pass any IT exam!](#)

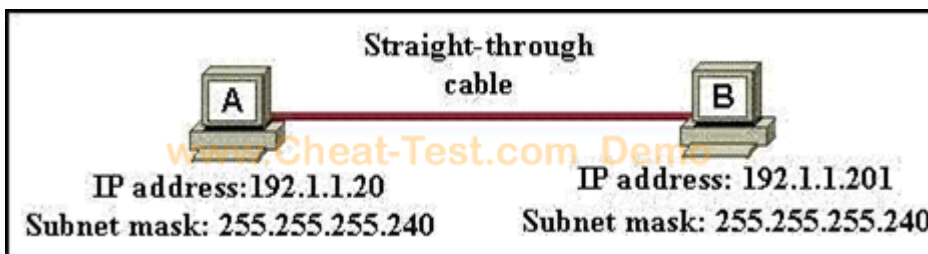
1. Refer to the exhibit. The junior network support staff provided the diagram as a recommended configuration for the first phase of a four-phase network expansion project. The entire network expansion will have over 1000 users on 14 network segments and has been allocated this IP address space: 192.168.1.1 through 192.168.5.255 192.168.100.1 through 198.168.100.255. What are three problems with this design? (Choose three.)



- A. The AREA 1 IP address space is inadequate for the number of users.
- B. The AREA 3 IP address space is inadequate for the number of users.
- C. AREA 2 could use a mask of /25 to conserve IP address space.
- D. The network address space that is provided requires a single network-wide mask.
- E. The router-to-router connection is wasting address space.
- F. The broadcast domain in AREA 1 is too large for IP to function.

Answer: A, C, E

2. A network administrator is connecting PC hosts A and B directly through their Ethernet interfaces as shown in the graphic. Ping attempts between the hosts are unsuccessful. What can be done to provide connectivity between the hosts? (Choose two.)

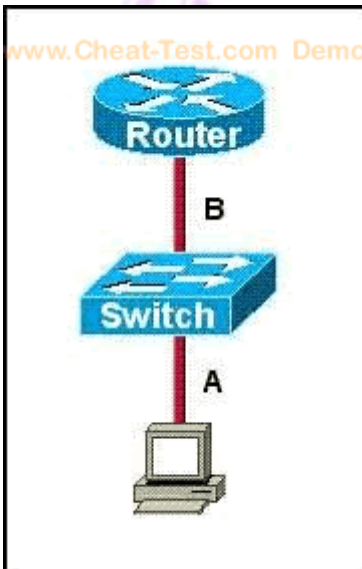


- A. A crossover cable should be used in place of the straight-through cable.
- B. A rollover cable should be used in place of the straight-through cable.
- C. The subnet masks should be set to 255.255.255.192.
- D. A default gateway needs to be set on each host.

- E. The hosts must be reconfigured to use private IP addresses for direct connections of this type.
- F. The subnet masks should be set to 255.255.255.0.

Answer: A, F

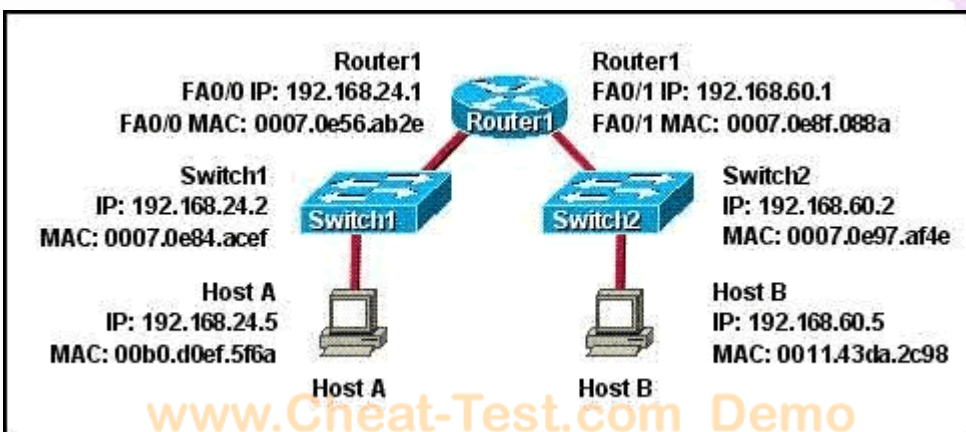
3. Refer to the exhibit. The two connected ports on the switch are not turning orange or green. What would be the most effective steps to troubleshoot this physical layer problem? (Choose three.)



- A. Ensure that the Ethernet encapsulations match on the interconnected router and switch ports.
- B. Ensure that cables A and B are straight-through cables.
- C. Ensure cable A is plugged into a trunk port.
- D. Ensure the switch has power.
- E. Reboot all of the devices.
- F. Reseat all cables.

Answer: B, D, F

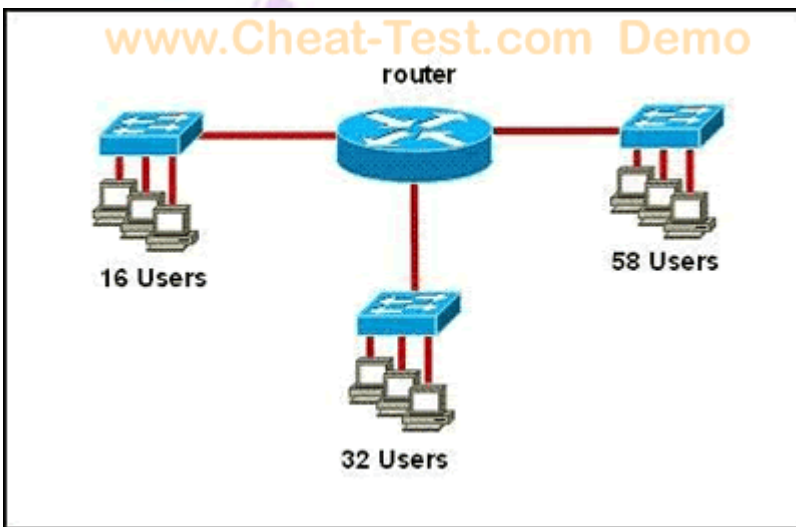
4. Refer to the exhibit. Host A needs to send data to Host B. Which Layer 2 and Layer 3 destination addresses will be used to send the data from Host A to Host B?



- A. 192.168.60.5 and 0011.43da.2c98
- B. 192.168.60.5 and 0007.0e56.ab2e
- C. 192.168.24.1 and 0007.0e56.ab2e
- D. 192.168.24.2 and 0007.0e84.acef

Answer: B

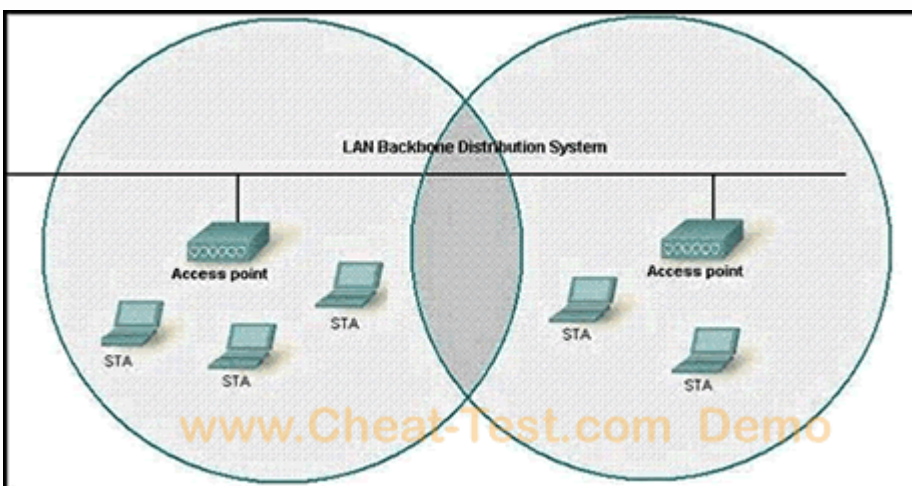
5. Refer to the exhibit. The IP address space of 128.107.7.0/24 has been allocated for all devices on this network. All devices must use the same subnet mask and all subnets are usable. Which subnet mask is required to apply the allocated address space to the configuration that is shown?



- A. 255.255.254.0
- B. 255.255.255.0
- C. 255.255.255.128
- D. 255.255.255.192
- E. 255.255.255.224

Answer: D

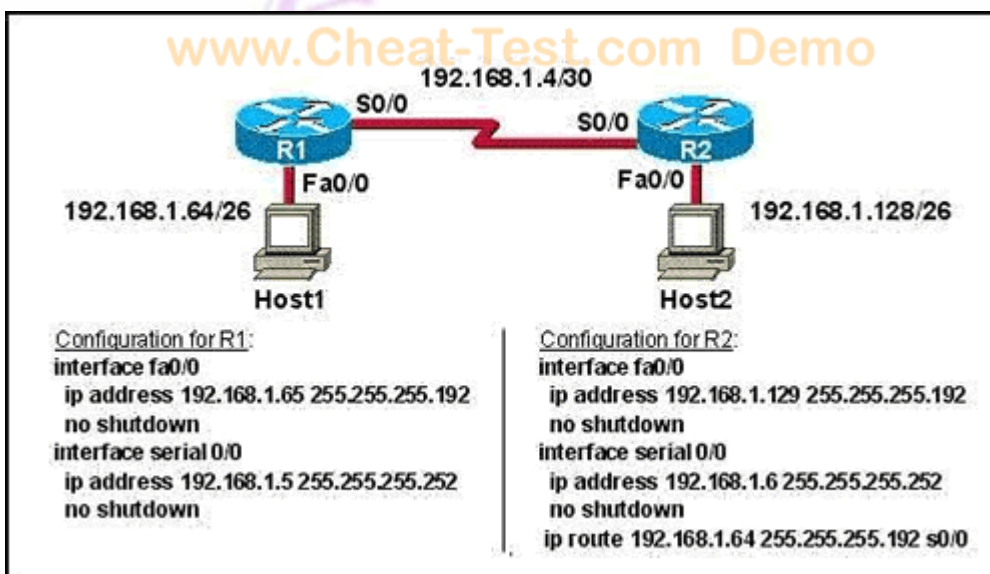
6. Refer to the exhibit. What two facts can be determined from the WLAN diagram? (Choose two.)



- A. The area of overlap of the two cells represents a basic service set (BSS).
- B. The network diagram represents an extended service set (ESS).
- C. Access points in each cell must be configured to use channel 1.
- D. The area of overlap must be less than 10% of the area to ensure connectivity.
- E. The two APs should be configured to operate on different channels.

Answer: B, E

7. Refer to the exhibit. A technician pastes the configurations in the exhibit into the two new routers shown. Otherwise, the routers are configured with their default configurations. A ping from Host1 to Host2 fails, but the technician is able to ping the S0/0 interface of R2 from Host1. The configurations of the hosts have been verified as correct. What could be the cause of the problem?



- A. The serial cable on R1 needs to be replaced.
- B. The interfaces on R2 are not configured properly.
- C. R1 has no route to the 192.168.1.128 network.
- D. The IP addressing scheme has overlapping subnetworks.
- E. The ip subnet-zero command must be configured on both routers.

Answer: C

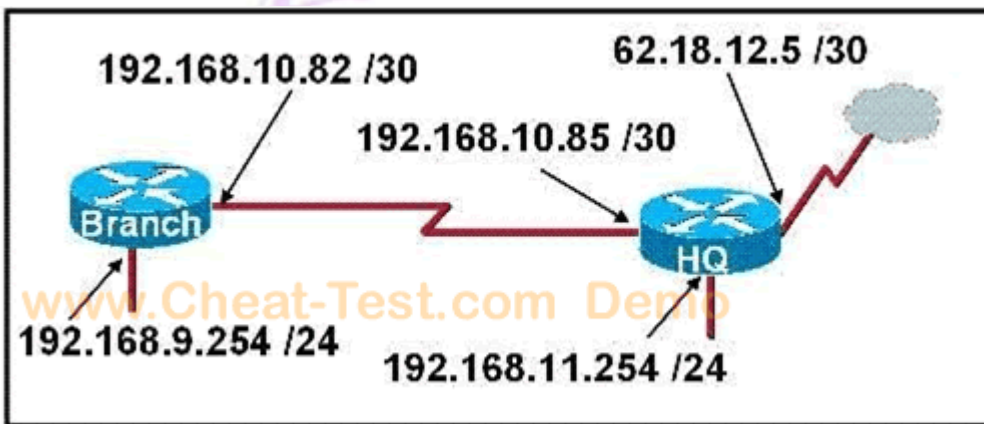
8. Refer to the exhibit. What is the effect of the configuration that is shown?

```
line vty 0 4
password 7 030752180500
login
transport input ssh
```

- A. It configures SSH globally for all logins.
- B. It tells the router or switch to try to establish an SSH connection first and if that fails to use Telnet.
- C. It configures the virtual terminal lines with the password 030752180500.
- D. It configures a Cisco network device to use the SSH protocol on incoming communications via the virtual terminal ports.
- E. It allows seven failed login attempts before the VTY lines are temporarily shutdown.

Answer: D

9. After the router interfaces shown in the diagram have been configured, it is discovered that hosts in the Branch LAN cannot access the Internet. Further testing reveals additional connectivity issues. What will fix this problem?



- A. Change the address of the Branch router LAN interface.
- B. Change the address of the Branch router WAN interface.
- C. Change the subnet mask of the HQ router LAN interface.
- D. Change the address of the HQ router LAN interface.
- E. Change the address of the HQ router interface to the Internet.
- F. Change the subnet mask of the HQ router interface to the Internet.

Answer: B

10. Refer to the exhibit. Serial0/0 does not respond to a ping request from a host on the FastEthernet0/0 LAN. How can this problem be corrected?

```
BHM# show ip interface brief www.Cheat-Test.com Demo
```

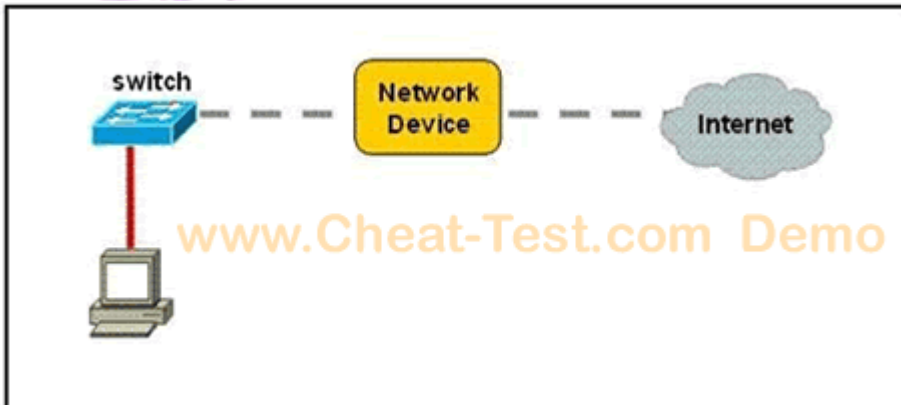
Interface	IP-Address	OK?	Method Status	Protocol
FastEthernet0/0	192.168.16.1	YES	NVRAM up	up
Serial0/0	192.168.15.2	YES	NVRAM administratively down	down
FastEthernet0/1	192.168.17.1	YES	NVRAM up	up
Serial0/1	unassigned	YES	NVRAM administratively down	down

- A. Enable the Serial 0/0 interface.
- B. Correct the IP address for Serial 0/0.
- C. Correct the IP address for FastEthernet 0/0.
- D. Change the encapsulation type on Serial 0/0.

E. Enable autoconfiguration on the Serial 0/0 interface.

Answer: A

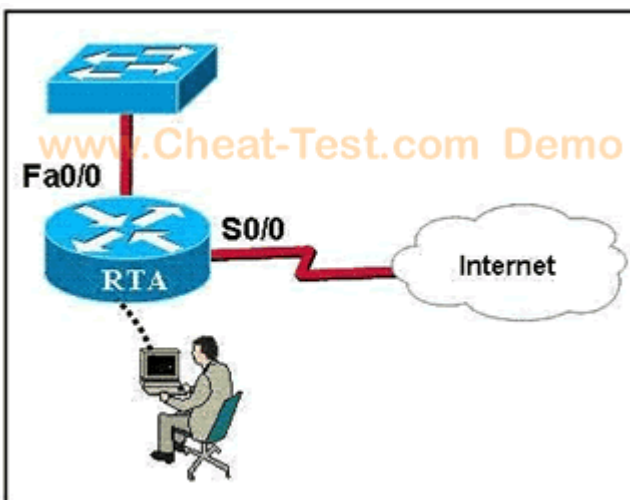
11. Refer to the exhibit. A network device needs to be installed in the place of the icon labeled Network Device to accommodate a leased line attachment to the Internet. Which network device and interface configuration meets the minimum requirements for this installation?



- A. a router with two Ethernet interfaces
- B. a switch with two Ethernet interfaces
- C. a router with one Ethernet and one serial interface
- D. a switch with one Ethernet and one serial interface
- E. a router with one Ethernet and one modem interface

Answer: C

12. Refer to the exhibit. The network administrator is configuring RTA to connect to a non-Cisco network. Which two commands would be applied to the S0/0 WAN interface, but not to the Fa0/0 LAN interface? (Choose two.)



- A. speed
- B. no shutdown
- C. ip address
- D. authentication pap
- E. encapsulation ppp

Answer: D, E

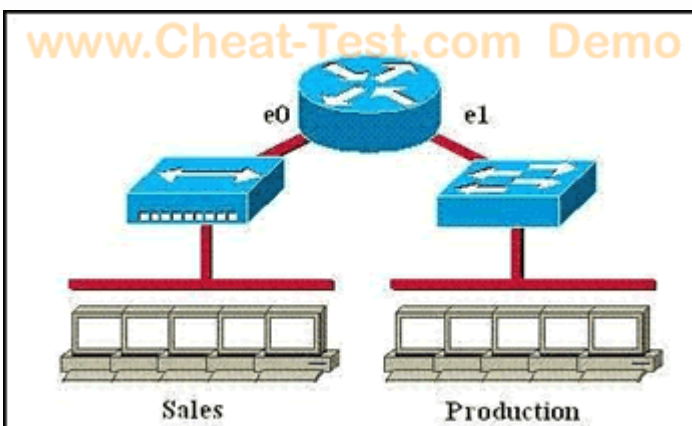
13. Refer to the exhibit. The network shown in the exhibit is running the RIPv2 routing protocol. The network has converged, and the routers in this network are functioning properly. The FastEthernet0/0 interface on R1 goes down. In which two ways will the routers in this network respond to this change? (Choose two.)



- A. All routers will reference their topology database to determine if any backup routes to the 192.168.1.0 network are known.
- B. Routers R2 and R3 mark the route as inaccessible and will not accept any further routing updates from R1 until their hold-down timers expire.
- C. Because of the split-horizon rule, router R2 will be prevented from sending erroneous information to R1 about connectivity to the 192.168.1.0 network.
- D. When router R2 learns from R1 that the link to the 192.168.1.0 network has been lost, R2 will respond by sending a route back to R1 with an infinite metric to the 192.168.1.0 network.
- E. R1 will send LSAs to R2 and R3 informing them of this change, and then all routers will send periodic updates at an increased rate until the network again converges.

Answer: C, D

14. Which of the following statements describe the network shown in the graphic? (Choose two.)



- A. There are two broadcast domains in the network.
- B. There are four broadcast domains in the network.
- C. There are six broadcast domains in the network.
- D. There are four collision domains in the network.
- E. There are five collision domains in the network.
- F. There are seven collision domains in the network.

Answer: A, F

15. The administrator is unable to establish connectivity between two Cisco routers. Upon reviewing the command output of both routers, what is the most likely cause of the problem?

<pre>RtrA# show running-config <some output text omitted> enable password cisco hostname RtrA username RtrB password cisco interface serial 0/0 ip address 10.0.8.1 255.255.248.0 encapsulation ppp ppp authentication chap</pre>	<pre>RtrB# show running-config <some output text omitted> enable password cisco1 hostname RtrB username RtrA password cisco1 interface serial 0/0 ip address 10.0.15.2 255.255.248.0 encapsulation ppp ppp authentication chap</pre>
--	---

- A. Authentication needs to be changed to PAP for both routers.
- B. Serial ip addresses of routers are not on the same subnet.
- C. Username/password is incorrectly configured.
- D. Router names are incorrectly configured.

Answer: C

16. Why would a network administrator configure port security on a switch?

- A. to prevent unauthorized Telnet access to a switch port
- B. to limit the number of Layer 2 broadcasts on a particular switch port
- C. to prevent unauthorized hosts from accessing the LAN
- D. to protect the IP and MAC address of the switch and associated ports
- E. to block unauthorized access to the switch management interfaces over common TCP ports

Answer: C

17. Which two statements best describe the wireless security standard that is defined by WPA? (Choose two.)

- A. It specifies use of a static encryption key that must be changed frequently to enhance security.
- B. It requires use of an open authentication method.

- C. It specifies the use of dynamic encryption keys that change each time a client establishes a connection.
- D. It requires that all access points and wireless devices use the same encryption key.
- E. It includes authentication by PSK.

Answer: C, E

18. Which two statements describe the operation of the CSMA/CD access method? (Choose two.)
- A. In a CSMA/CD collision domain, multiple stations can successfully transmit data simultaneously.
 - B. In a CSMA/CD collision domain, stations must wait until the media is not in use before transmitting.
 - C. The use of hubs to enlarge the size of collision domains is one way to improve the operation of the CSMA/CD access method.
 - D. After a collision, the station that detected the collision has first priority to resend the lost data.
 - E. After a collision, all stations run a random backoff algorithm. When the backoff delay period has expired, all stations have equal priority to transmit data.
 - F. After a collision, all stations involved run an identical backoff algorithm and then synchronize with each other prior to transmitting data.

Answer: B, E

19. Assuming a subnet mask of 255.255.248.0, which three addresses are valid host addresses? (Choose three.)
- A. 172.16.8.0
 - B. 172.16.9.0
 - C. 172.16.16.0
 - D. 172.16.20.0
 - E. 172.16.24.0
 - F. 172.16.31.0

Answer: B, D, F

20. Which form of NAT maps multiple private IP addresses to a single registered IP address by using different ports?
- A. static NAT
 - B. dynamic NAT
 - C. overloading
 - D. overlapping
 - E. port loading

Answer: C

21. What should be part of a comprehensive network security plan?
- A. Allow users to develop their own approach to network security.
 - B. Physically secure network equipment from potential access by unauthorized individuals.
 - C. Encourage users to use personal information in their passwords to minimize the likelihood of passwords being forgotten.
 - D. Delay deployment of software patches and updates until their effect on end-user equipment is well known and widely reported.

E. Minimize network overhead by deactivating automatic antivirus client updates.

Answer: B

22. A single 802.11g access point has been configured and installed in the center of a square office. A few wireless users are experiencing slow performance and drops while most users are operating at peak efficiency. What are three likely causes of this problem? (Choose three.)

- A. mismatched TKIP encryption
- B. null SSID
- C. cordless phones
- D. mismatched SSID
- E. metal file cabinets
- F. antenna type or direction

Answer: C, E, F

23. What two actions must a router take in order to route incoming packets? (Choose two.)

- A. Identify the destination network address of each packet.
- B. Identify the source network address of each packet.
- C. Validate sources of routing information.
- D. Inspect the routing table to select the best path to the destination network address.
- E. Verify the receipt of routed packets by the next hop router.
- F. Inspect the ARP table to verify a legitimate source MAC address for each packet.

Answer: A, D

24. What are two recommended ways of protecting network device configuration files from outside network security threats? (Choose two.)

- A. Allow unrestricted access to the console or VTY ports.
- B. Use a firewall to restrict access from the outside to the network devices.
- C. Always use Telnet to access the device command line because its data is automatically encrypted.
- D. Use SSH or another encrypted and authenticated transport to access device configurations.
- E. Prevent the loss of passwords by disabling password encryption.

Answer: B, D

25. Which two statements describe the IP address 10.16.3.65/23? (Choose two.)

- A. The subnet address is 10.16.3.0 255.255.254.0.
- B. The lowest host address in the subnet is 10.16.2.1 255.255.254.0.
- C. The last valid host address in the subnet is 10.16.2.254 255.255.254.0
- D. The broadcast address of the subnet is 10.16.3.255 255.255.254.0.
- E. The network is not subnetted.

Answer: B, D

26. At which layer of the OSI model does the protocol that provides the information displayed by the show cdp neighbors command operate?

- A. physical
- B. data link
- C. network
- D. transport
- E. application

Answer: B

27. Which of the following describe private IP addresses? (Choose two.)

- A. addresses chosen by a company to communicate with the Internet
- B. addresses that cannot be routed through the public Internet
- C. addresses that can be routed through the public Internet
- D. a scheme to conserve public addresses
- E. addresses licensed to enterprises or ISPs by an Internet registry organization

Answer: B, D

28. WAN data link encapsulation types include which of the following? (Choose two.)

- A. T1
- B. Frame Relay
- C. DSL
- D. PPP
- E. ISDN

Answer: B, D

29. Which of the following are found in a TCP header, but not in a UDP header? (Choose three.)

- A. sequence number
- B. acknowledgment number
- C. source port
- D. destination port
- E. window size
- F. checksum

Answer: A, B, E

30. What is the subnet address of 172.16.159.159/22?

- A. 172.16.0.0
- B. 172.16.128.0
- C. 172.16.156.0
- D. 172.16.159.0
- E. 172.16.159.128
- F. 172.16.192.0

Answer: C

Cheat-Test.com - The Worldwide Renowned IT Certification Material Provider!
The safer, easier way to help you pass any IT Certification exams.

We provide high quality IT Certification exams practice questions and answers (Q&A). Especially [Cisco](#), [Microsoft](#), [HP](#), [IBM](#), [Oracle](#), [CompTIA](#), [Adobe](#), [Apple](#), [Citrix](#), [EMC](#), [Lotus](#), [Nortel](#), [SUN](#) and so on.

And help you pass any IT Certification exams at the first try.

Cheat-Test product Features:

- Verified Answers Researched by Industry Experts
- Questions updated on regular basis
- Like actual certification exams our product is in multiple-choice questions (MCQs).
- Our questions and answers are backed by our GUARANTEE.

7x24 online customer service: contact@cheat-test.com

Click Here to get more Free Cheat-Test Certification exams!

<http://www.Cheat-Test.com>