

**Exam : Microsoft 70-291**

**Title : Implementing, Managing, and  
Maintaining a Microsoft Windows  
Server 2003 Network Infra**

**Version : Demo**

Cheat-Test, [help you pass any IT exam!](#)

1. You are the network administrator for your company. The network consists of a single Active Directory domain. The domain contains 35 Windows Server 2003 computers; 3,000 Windows XP Professional computers; and 2,000 Windows 2000 Professional computers. Windows Server Update Services (WSUS) is installed on a server named Server1. The necessary Group Policy object (GPO) is configured. You need to confirm whether all computers in the domain have received all approved updates from Server1. What should you do on Server1?
- A. Install and configure Urlscan.exe.
  - B. At the command prompt, type gpresult /scope COMPUTER.
  - C. Open the WSUS console. Run the Status of Computers report.
  - D. Open the WSUS console. Run the Synchronization Results report.

Cheat-Test.com Answer: C

2. You are the network administrator for your company. The network consists of a single Active Directory domain. All servers run Windows Server 2003. All client computers run Windows XP Professional. You need to implement a new software update infrastructure. You discover that security patches, critical updates, and service packs have never been installed on any client computer on the network. You install Windows Server Update Services (WSUS) on a Windows Server 2003 computer named Server5. You synchronize and approve all of the current security patches, critical updates, and service packs. You need to ensure that all client computers receive all Microsoft security patches, critical updates, and service packs. Which two actions should you perform? (Each correct answer presents part of the solution. Choose two.)
- A. Open the WSUS console. Select the option to automatically approve WSUS updates.
  - B. Install the Automatic Updates client on all client computers.
  - C. Modify the Microsoft Update settings of the Default Domain Controller organizational unit (OU) Group Policy object (GPO) to point client computers to http://server5.
  - D. Modify the Microsoft Update settings of the Default Domain Policy Group Policy object (GPO) to point client computers to http://server5.
  - E. Open the WSUS console. Create a target group and assign all client computers to the group.

Cheat-Test.com Answer: B, D

3. You have an DNS server that runs Windows Server 2003 Service Pack 2 (SP2). You need to ensure that an e-mail message is sent to the administrator if the DNS server service stops. You create a script that sends e-mail when the script is executed. What should you do next?
- A. Install the POP3 service on the DNS server.
  - B. Modify the DNS Server service dependencies.
  - C. Modify the DNS Server service Recovery options.
  - D. Install the Universal Description, Discovery, and Integration (UDDI) services on the DNS server.

Cheat-Test.com Answer: C

4. How many years of experience do you have implementing, managing, and maintaining a Windows Server 2003 network infrastructure?
- A. I have not done this yet.
  - B. Less than 6 months
  - C. More than 6 months but less than 1 year
  - D. 1-2 years

- E. 2-3 years
- F. More than 3 years

Cheat-Test.com Answer: A

5. How many years of experience do you have using any version of Windows Server?
- A. I have not done this yet.
  - B. Less than 6 months
  - C. More than 6 months but less than 1 year
  - D. 1-2 years
  - E. 2-3 years
  - F. More than 3 years

Cheat-Test.com Answer: A

6. Rate your level of proficiency configuring and troubleshooting IP and DHCP.
- A. Very High
  - B. High
  - C. Moderate
  - D. Low
  - E. Very Low

Cheat-Test.com Answer: A

7. Rate your level of proficiency with implementing, managing, and maintaining name resolution, including installing and configuring DNS Server service and managing and monitoring DNS.
- A. Very High
  - B. High
  - C. Moderate
  - D. Low
  - E. Very Low

Cheat-Test.com Answer: A

8. Rate your level of proficiency with implementing secure network administration procedures, installing and configuring software update infrastructure, and monitoring and troubleshooting network protocol security.
- A. Very High
  - B. High
  - C. Moderate
  - D. Low
  - E. Very Low

Cheat-Test.com Answer: A

9. Rate your level of proficiency with implementing, managing, and maintaining Routing and Remote Access, including configuring user authentication, managing TCP/IP routing, implementing secure access between private networks, troubleshooting user access to remote access services, and troubleshooting RRAS routing.

- A. Very High
- B. High
- C. Moderate
- D. Low
- E. Very Low

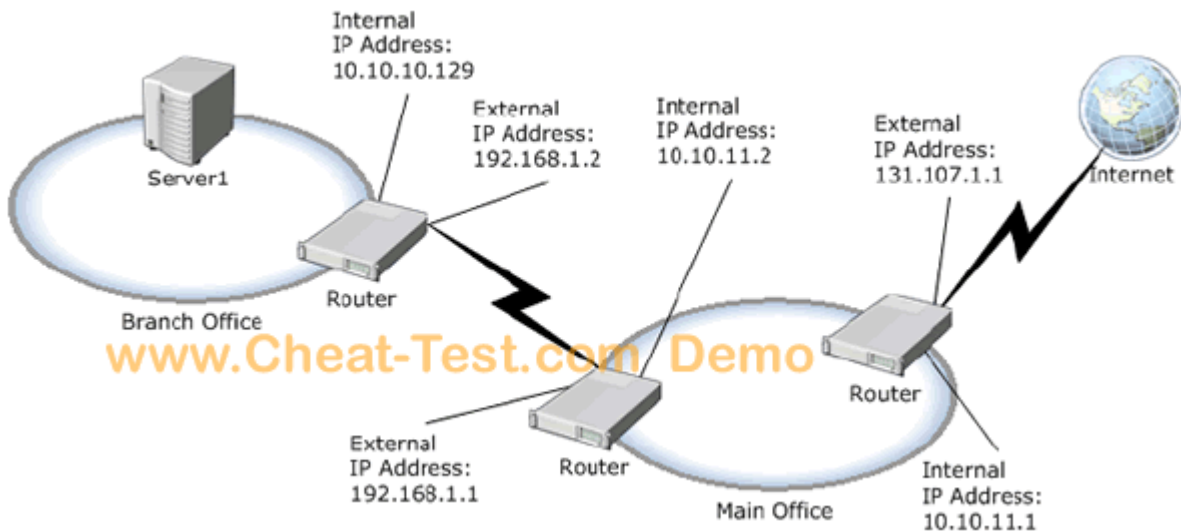
Cheat-Test.com Answer: A

10. Rate your level of proficiency with maintaining network infrastructures, including monitoring network traffic, and troubleshooting Internet connectivity and server services.

- A. Very High
- B. High
- C. Moderate
- D. Low
- E. Very Low

Cheat-Test.com Answer: A

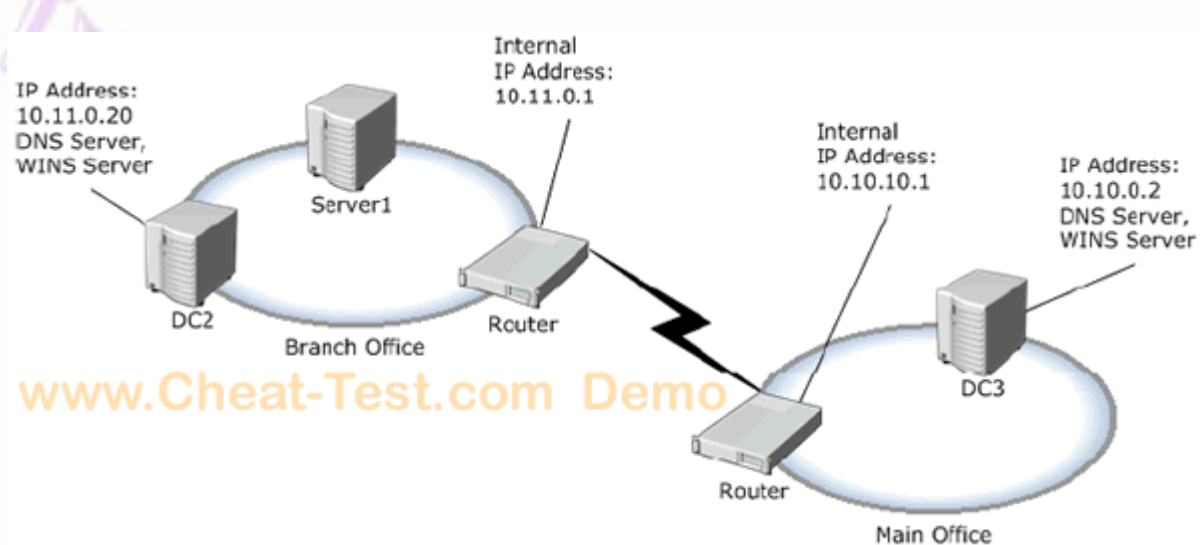
11. Your company has two offices. All servers run Windows Server 2003 Service Pack 2 (SP2). The relevant portion of the network is configured as shown in the exhibit. (Click the Exhibit button.) You need to ensure that Server1 can communicate with Web servers on the Internet. Which default gateway should you assign to Server1?



- A. 10.10.10.129
- B. 10.10.11.1
- C. 131.107.1.1
- D. 192.168.1.1

Cheat-Test.com Answer: A

12. Your company has two offices. The network consists of a single Active Directory domain. You have two domain controllers named DC2 and DC3. All servers run Windows Server 2003 Service Pack 2 (SP2). The relevant portion of the network is configured as shown in the exhibit. (Click the Exhibit button.)



You verify the IP configuration of Server1 as shown in the following Command Prompt window.

```

C:\> Command Prompt

Ethernet adapter Local Area Connection:

    Connection-specific DNS Suffix  . : 
    Description . . . . .           : Intel 21140-Based PCI Fast Ethernet Adapt
er (Generic)
    Physical Address. . . . .       : 00-03-FF-89-5F-29
    DHCP Enabled. . . . .           : No
    IP Address. . . . .             : 10.11.0.30
    Subnet Mask . . . . .           : 255.255.0.0
    Default Gateway . . . . .       : 10.11.0.1
    DNS Servers . . . . .           : 10.11.0.20
  
```

You need to ensure that Server1 can locate a domain controller if a single server fails. Which IP configuration should you change on Server1?

- A. Add 10.10.0.2 as a DNS server.
- B. Add 10.10.0.2 as a WINS server.
- C. Add 10.11.0.20 as a WINS server.
- D. Add a second network adapter that has an IP address of 10.10.0.20.

Cheat-Test.com Answer: A

13. Your company has a main office and plans to open a new branch office. All servers run Windows Server 2003 Service Pack 2 (SP2). You assign the network address of 192.168.1.64/26 to the new branch office. You need to configure the network settings for a server in the branch office. Which IP address should you use?

- A. 192.168.1.10
- B. 192.168.1.63
- C. 192.168.1.125
- D. 192.168.1.200

Cheat-Test.com Answer: C

14. Your network consists of a single Active Directory domain. All servers run Windows Server 2003 Service Pack 2 (SP2).

You have a DHCP server that has 10 scopes. You need to add a DNS server to all 10 scopes by using the minimum amount of administrative effort. What should you do?

- A. In the DHCP snap-in, add a server option.
- B. In the DHCP snap-in, add a scope option for each scope.
- C. At a command prompt on the server, run the Chcp command and code page 863.
- D. At a command prompt on the server, run the Netsh command and configure the popd subcontext.

Cheat-Test.com Answer: A

15. Your network consists of a single Active Directory domain. All servers run Windows Server 2003 Service Pack 2 (SP2).

You install and configure the DHCP service on a server as show in the exhibit. (Click the Exhibit button.)



You need to ensure that computers can receive IP configurations from the DHCP server. What should you do?

- A. Add a scope option.
- B. Add a server option.
- C. Authorize the DHCP server.
- D. Reconcile the DHCP scope.

Cheat-Test.com Answer: C

16. Your network consists of a single Active Directory domain. You have a DHCP server named Server1 that runs Windows Server 2003 Service Pack 2 (SP2). You have a computer named Computer1 that runs Windows XP Professional Service Pack 3 (SP3). You need to administer the DHCP service on Server1 from Computer1. What should you do first?

- A. On Computer1, install adminpak.msi.
- B. On Computer1, at a command prompt run the Netsh command.

- C. On Server1, open the DHCP snap-in and select Export List.
- D. On Server1, open the DHCP snap-in and add Computer1 to the list of servers.

Cheat-Test.com Answer: A

17. Your network consists of a single Active Directory domain. All servers run Windows Server 2003 Service Pack 2 (SP2).

You have a member server named Server1 that is configured as a DHCP server. You install a new stand-alone server named Server2 in the same subnet as Server1. You install the DHCP service on Server2. You need to ensure that Server2 can assign IP configurations to clients on the subnet. What should you do first?

- A. Join Server2 to the domain.
- B. Restart the DHCP Server service on Server1.
- C. From the DHCP snap-in on Server1, add Server2 by using the Add Server option.
- D. From the DHCP snap-in on Server2, add Server 1 by using the Add Server option.

Cheat-Test.com Answer: A

18. Your network consists of a single Active Directory domain named nwtraders.com. All network servers run Windows Server 2003 Service Pack 2 (SP2). The relevant IP configuration for the network is configured as shown in the following table.

Name	DC1	Router1	Server2
Role	Domain controller	Hardware router	Stand-alone server
IP address	172.16.16.2	172.16.16.11 172.16.16.129	172.16.16.168
Subnet mask	255.255.255.192	255.255.255.192	255.255.255.192
Default gateway	172.16.16.1	172.16.16.1	172.16.16.1
Preferred DNS server	172.16.16.2	172.16.16.2	172.16.16.2
Secondary DNS server	172.16.16.130	172.16.16.130	172.16.16.130

DC1 contains an Active Directory-integrated zone for nwtraders.com.

From Server2, you run the Ping 172.26.26.11 command and receive a request timed out error message.

From Server2, you run the Ping 172.16.16.129 command and receive a reply.

You need to ensure that you can join Server2 to the nwtraders.com domain. What should you do?

- A. Set the IP address to 172.16.16.2.
- B. Set the subnet mask to 255.255.255.128.
- C. Set the default gateway address to 172.16.16.129.
- D. Set the preferred DNS server address to 172.16.16.130.

Cheat-Test.com Answer: C

19. You have a file server named Server1 that runs Windows Server 2003 Service Pack 2 (SP2). All client computers run Windows XP Professional Service Pack 3 (SP3). The IP configuration for Server1 is shown in the following table.

Setting	Configuration
IP address	172.16.90.13
Subnet mask	255.255.128.0
Default gateway	172.16.16.1
Preferred DNS server	172.16.16.2
Secondary DNS server	172.16.130.130

You replace the network card on Server1. You configure the new network card to use the existing IP configuration.

Users reports that they receive a time-out error message when they connect to Server1.

You need to ensure that users can immediately connect to Server1.

Which command should you instruct users to run?

- A. Arp d 172.16.90.13
- B. Ipconfig /flushdns
- C. Nbtstat R
- D. Netstat r 172.16.90.13

Cheat-Test.com Answer: A

20. You install three servers that run Windows Server 2003 Service Pack 2 (SP2). The servers are on the same subnet.

You get the IP configuration for the servers as shown in the following table.

Name	IP address	Subnet mask	Default gateway
Server1	10.1.1.253	255.255.255.0	10.1.1.1
Server2	10.1.1.254	255.255.255.0	10.1.1.1
Server3	10.1.1.255	255.255.255.0	10.1.1.1

You need to ensure that you can establish communication between the three servers.

What should you do?

- A. Modify the IP address on Server3.
- B. Modify the IP address on Server1.
- C. Configure the hosts file on each server.
- D. Modify the default gateway for each server.

Cheat-Test.com Answer: A

Cheat-Test.com - The Worldwide Renowned IT Certification Material Provider!  
The safer, easier way to help you pass any IT Certification exams.

We provide high quality IT Certification exams practice questions and answers (Q&A). Especially [Cisco](#), [Microsoft](#), [HP](#), [IBM](#), [Oracle](#), [CompTIA](#), [Adobe](#), [Apple](#), [Citrix](#), [EMC](#), [Lotus](#), [Nortel](#), [SUN](#) and so on.

And help you pass any IT Certification exams at the first try.

#### **Cheat-Test product Features:**

- Verified Answers Researched by Industry Experts
- Questions updated on regular basis
- Like actual certification exams our product is in multiple-choice questions (MCQs).
- Our questions and answers are backed by our GUARANTEE.

**7x24 online customer service:** [contact@cheat-test.com](mailto:contact@cheat-test.com)

**Click Here to get more Free Cheat-Test Certification exams!**

**<http://www.Cheat-Test.com>**